



Lehigh University Fraternity Environment (April 2026)

- **Pi Lambda Phi (PiLam) Loses Lehigh Recognition:** LU's newest chapter goes from 'Expansion competition winner' to 'Most recent fraternity closure' in only two years.
- Recent success rate for LU recolonizations; Who might replace Pi Lambda Phi?; Lehigh trending to larger fraternity organizations?
- Who is administering LU fraternities? 'Student Affairs Office' organization chart.
- Increase in Greek Chapter Disciplinary Incidents; Lehigh as 'At-Risk' Campus.
- Current Status of Former Fraternity Houses.
- Challenges For A Sustainable Fraternity At Lehigh.
- Details section: including full text copies of documents mentioned in slides, additional reference material, and other information.



PiLam Loses Lehigh Recognition (2025.12.27 website extract)

- PiLam, which **recolonized at Lehigh in Spring 2024**, and was placed on **“Interim Suspension” as of 9/4/2025**, now appears on LU’s list of **“Formerly Recognized Chapters” as closed in 2025 due to hazing**.
- LU has now closed 7 chapters since 2020 for hazing, alcohol, and/or risk management.

Formerly Recognized Chapters

The following fraternities and sororities have lost their recognition by Lehigh University and/or by their Inter/National Headquarters as official student groups because they failed to comply with University and/or Inter/National guidelines.

To view a full list of formerly recognized chapters from Lehigh University, please click [here](#).

Chapter	Year Closed	Reason	Closed By
Pi Lambda Phi	2025	Hazing	Lehigh University
Chi Psi	2024	Hazing	Lehigh University
Phi Sigma Kappa	2024	Hazing & Alcohol	Lehigh University
Phi Delta Theta	2023	Alcohol & Risk Management	Lehigh University
Alpha Tau Omega	2022	Hazing & Alcohol	Headquarters & Lehigh University
Phi Kappa Theta	2020	Alcohol & Risk Management	Lehigh University
Theta Xi	2020	Alcohol & Risk Management	Lehigh University

Source: <https://studentaffairs.lehigh.edu/content/conduct-status>

The Kappa Alpha Alumni Association of Lehigh University



The Rise and Fall of Pi Lambda Phi: **the Rise**

- PiLam was LU's 2023 'top pick' out of 22 fraternities submitting expansion proposals.
- Some of PiLam's advantages included:
 - National staff (~6 FT + 2 PT) with the infrastructure needed to meet LU Fraternity Expansion Policy requirements, including existing training materials, processes, and recent start-up experience.
 - Demonstrated ability to provide on-site staff at Lehigh during the first year to actively manage the PiLam chapter start-up (as specified by Lehigh).
 - An ongoing track record of colonizing new chapters and recolonizations, (as described in the 14Jul2025 PiLam web article 'Pi Lambda Phi Chapter Expansion Roadmap', [see Details section](#)).
 - A network of existing Lehigh PiLam alumni who were mobilized to support the recolonization.
 - Successful 'Final Five' presentation to the **LU selection committee** consisting of a member from each LU IFC fraternity, two IFC executive board representatives, one Fraternity and Sorority Life staff member, a staff member from housing services, and two other Lehigh staff members.
 - Financial resources enabling the required recolonization spending, including:
 - 1) preparation of recolonization submission materials and final on-site presentation to LU,
 - 2) expenditures for first year on-site staff at Lehigh and other start-up facilitation costs,
 - 3) expenses for common area furnishings for the assigned chapter house. (Note: LU provides bedroom furnishings only, but must also approve common area furnishings.)



The Rise and Fall of Pi Lambda Phi: **the Fall**

- PiLam moved into the former Alpha Tau Omega house (capacity 27 students) in August 2024 with **30 in-house members** (28 SYS, 2 Juniors), plus 16 out-of-house members. These numbers remained stable for Spring 2025.
- **Chapter conduct:** by 9/24/2024, Lehigh placed them on **Disciplinary Probation** until 12/31/2024 due to several incidents. Another 10/24/2024 incident extended the probation period, and a 12/2/2024 incident resulted in a **Disciplinary Warning** and fine.
- Spring 2025 Accreditation report showed PiLam as ‘Accredited’, but listed 23 ‘**Chapter Development Questions**’ for PiLam for the 2025-26 year. (see Details section)
- Fall 2025 Occupancy report showed **only 16 in-house members** (10 SYS, 5 Juniors, 1 Senior), plus 37 out-of-house members, thus falling below LU’s occupancy requirement.
- PiLam conduct report (next slide) shows that a 9/3/2025 incident with **Hazing and Threats of Physical Violence** was followed by a 9/11/2025 **Drug/Alcohol incident**. LU placed PiLam on “**Interim Suspension**” as of 9/3/2025, but did not release the full incident report on the LU website until Dec 2025, when the final judgement of ‘**Disciplinary Dissolution - Effective 2025-12-02 to 2030-12-31**’ was revealed.

Source: <https://studentaffairs.lehigh.edu/content/conduct-status>



Pi Lambda Phi Full Incident Report



Office of the Dean of Students
Fraternity and Sorority Affairs
29 Trembley Drive
Bethlehem, PA 18015-3066
Tel: (610) 758-4157 | Fax: (610) 758-6692
Web: www.lehigh.edu/ofsa

Disciplinary History for Pi Lambda Phi Fraternity (PiLambdaP)

Incident Date: 2025-09-11 **Incident ID: 2025043301**

Respect for Community E1 (Failure to Comply)
Respect for Community I1A (ENF Policy Violation 1.A.1 - Drug/Alcohol Laws)

Disciplinary Probation (Corporate) -- Effective: to
Additional Sanctions/Stipulations
* Outcome will be associated with case# 2025029402

Incident Date: 2025-09-03 **Incident ID: 2025029402**

Incident Summary:

Members of Pi Lambda Phi participated in actions that could potentially harm another student physically, mentally, or emotionally. The student was threatened with weapons and received intimidating messages through both voice and text communication.

Respect for Others D1 (Hazing)
Respect for Community J1 (Encouraging Others)
Respect for Others A1A (Threats of Physical Violence)
Respect for Others F1 (Other Conduct)
Respect for Others (General)

Disciplinary Dissolution -- Effective: 2025-12-02 to 2030-12-31

The Kappa Alpha Alumni Association of Lehigh University



Recent Success Rate for LU Recolonizations

- Five formerly recognized fraternities have conducted recolonizations at LU since 2005:
 - **Delta Chi**, established at LU from 1952 - 1997, recolonized in 2009 (but without a house), received a Lehigh chapter house in 2015, and is still an active chapter today.
 - **Pi Kappa Alpha**, established at LU from 1929 - 2002, recolonized in 2009 and lasted 9 years before closing in 2018 (Reason: Risk Management).
 - **Phi Delta Theta**, established at LU from 1887 - 2001, recolonized in 2013 and lasted 10 years before closing in 2023 (Reason: Alcohol & Risk Management).
 - **Alpha Epsilon Pi**, established at LU from 1979 - 1991, then as 'unrecognized' chapter beginning 2001, received recognition and a Lehigh chapter house in 2015 and is still an active chapter today.
 - **Pi Lambda Phi**, established at LU from 1915 - 1995, recolonized in 2024 and lasted only 2 years before closing in 2025 (Reason: Hazing).
- Lehigh's sustainable IFC fraternity recolonization success rate over the last two decades now stands at **40%**.



Who Might Replace Pi Lambda Phi?

- Lehigh ultimately chose Pi Lambda Phi and Pi Kappa Phi (currently 152 active chapters with National staff of 50+) during the 2023 Expansion solicitation. However, three other fraternities also made the 'Final Five' cut and were invited to make on-campus presentations to the LU selection committee & interested students.
- See the B&W article on those presentations here ([or read the reprint in the Details section](https://thebrownandwhite.com/2023/09/24/lehigh-to-welcome-two-new-fraternities/)):
<https://thebrownandwhite.com/2023/09/24/lehigh-to-welcome-two-new-fraternities/>
- Those three were: (Note: chapter & Nat staff counts from fraternity own websites)
 - **Alpha Sigma Phi:** currently 163 chapters with National staff of 25; at LU from 1946 to 2005; Reason for closure: Overall Performance & Risk Management.
 - **Beta Theta Pi:** currently 141 chapters with National staff of 35; at LU from 1891 to 2008; Reason for closure: Hazing and Alcohol.
 - **Lambda Chi Alpha:** currently 166 chapters with National staff of 36; at LU from 1926 to 2014; Reason for closure: Unacceptable in Accreditation.
- If seeking a replacement for Pi Lambda Phi, LU might utilize the pre-work done in 2023 and approach one or more of the above finalist organizations.



Lehigh trending to larger fraternity organizations?

- Most current IFC fraternities have >100 chapters, including all 'Final Five' Runner-ups; while most of the recent closures have <50 chapters, with smaller national staffs.

56%: >100 chapters
 11%: 50-100 chapters
 33%: <50 chapters

Current IFC Chapters	Total Chapters	National Staff	Established at Lehigh	Fall 2025 Members
Chi Phi	46	6	1872	57
Psi Upsilon	25	8	1884	57
Delta Upsilon	64	16	1885	55
Sigma Phi Epsilon	187	50+	1907	55
Theta Chi	157	34	1942	68
Delta Chi	106	19	1952, 2009	66
Alpha Epsilon Pi	130	34	1978, 2015	54
Sigma Phi Delta	16	9	2013	59
Pi Kappa Phi	152	50+	2026	NA

Fraternities with <100 chapters still achieving average member sizes.

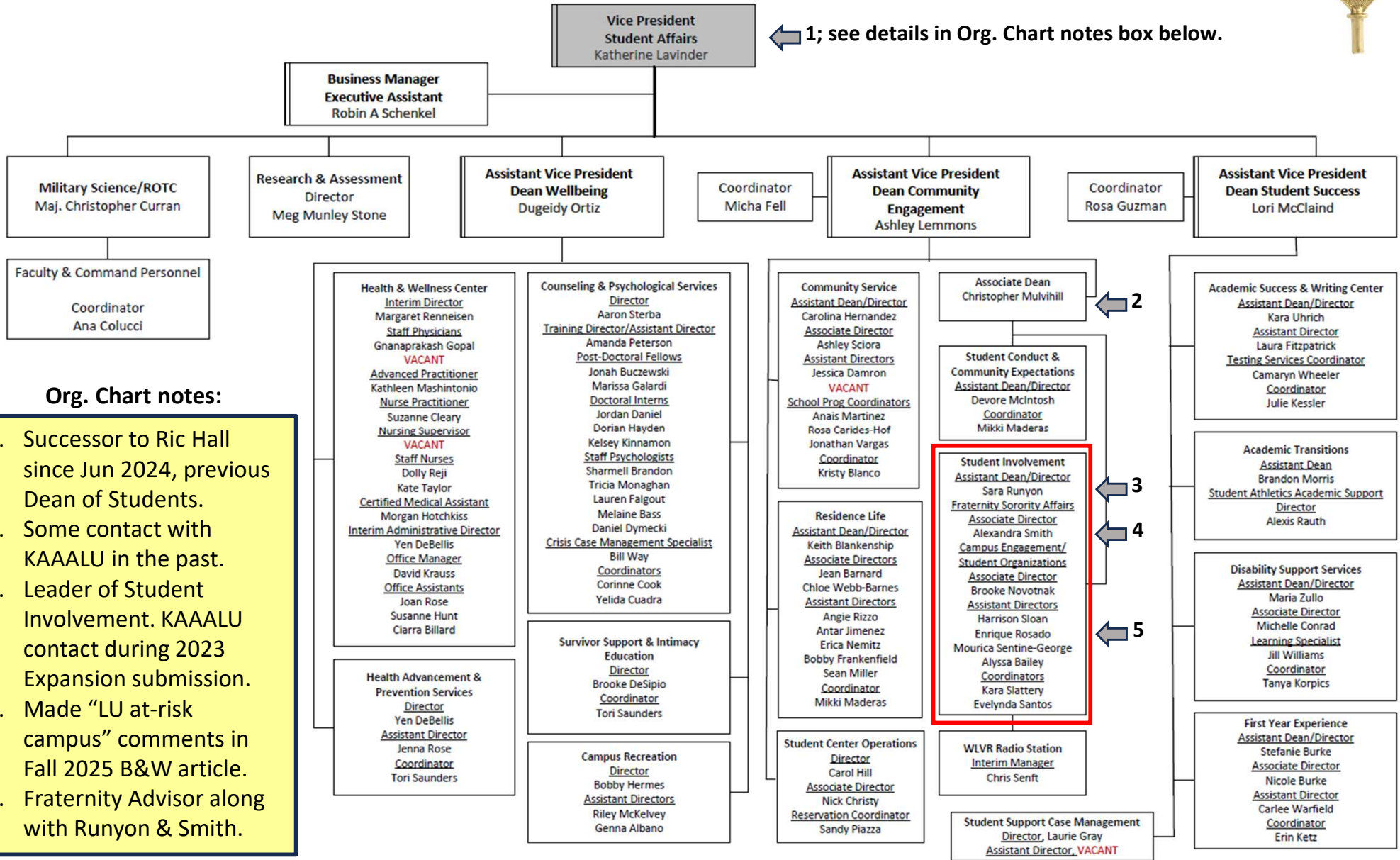
100%: >100 chapters

'Final Five' Runner-ups				Year Closed
Alpha Sigma Phi	163	25	1946	2005
Beta Theta Pi	141	35	1891	2008
Lambda Chi Alpha	166	36	1926	2014

29%: >100 chapters
 14%: 50-100 chapters
 57%: <50 chapters

Recent Closures				
Pi Lambda Phi	24	8	1915, 2024	2025
Chi Psi	33	19	1894	2024
Phi Sigma Kappa	60	24	1901	2024
Phi Delta Theta	189	37	1887, 2013	2023
Alpha Tau Omega	125	NA	1882	2022
Phi Kappa Theta	29	5	1929	2020
Theta Xi	44	7	1904	2020

LU Student Affairs Org. Chart Published (2026.03.20 extract)



← 1; see details in Org. Chart notes box below.

← 2

← 3

← 4

← 5

Org. Chart notes:

1. Successor to Ric Hall since Jun 2024, previous Dean of Students.
2. Some contact with KAAALU in the past.
3. Leader of Student Involvement. KAAALU contact during 2023 Expansion submission.
4. Made "LU at-risk campus" comments in Fall 2025 B&W article.
5. Fraternity Advisor along with Runyon & Smith.

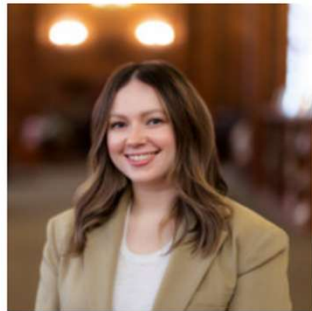
Source: [https://studentaffairs.lehigh.edu/sites/studentaffairs.lehigh.edu/files/offices/stuaff/docs/Org%20Chart%2002%20\(1\).pdf](https://studentaffairs.lehigh.edu/sites/studentaffairs.lehigh.edu/files/offices/stuaff/docs/Org%20Chart%2002%20(1).pdf)



LU Student Involvement Office Staff (2026.03.20 extract)

Office of Student Involvement / Contact & Staff

Staff and Contact Information



Sara Runyon

Assistant Dean & Director for Student Involvement

📍 Clayton University Center, G027B



Alexandra Smith

Associate Director, Fraternity and Sorority Life

📍 Clayton University Center, G027A



Enrique Rosado

Assistant Director, Fraternity and Sorority Life

📍 Clayton University Center, G021B

- Above staff are assigned as LU administration advisors to IFC fraternities shown below:
 - Alpha Epsilon Pi
 - Sigma Phi Epsilon
 - Pi Kappa Phi
 - Sigma Phi Delta
 - Theta Chi
 - Chi Phi
 - Delta Chi
 - Delta Upsilon
 - Psi Upsilon

Source: <https://studentaffairs.lehigh.edu/node/2561>

The Kappa Alpha Alumni Association of Lehigh University



Increase in Greek Chapter Disciplinary Incidents

- During Fall 2025, **four** IFC fraternities were under **Disciplinary Probation**, in all cases due to member conduct: Delta Chi: from 9/15/2025 – 12/5/2025 (alcohol related); Psi Upsilon: from 4/22/2025 – 5/10/2026 (vandalism of university staff member's car including homophobic slurs); Delta Upsilon: from 5/3/2025 – 12/31/2025 (alcohol related); Sigma Phi Epsilon: from 5/3/2025 – 12/31/2025 (alcohol related).
- In addition, **Pi Lambda Phi**, was placed on **Interim Suspension** starting 9/4/2025 which led to **loss of LU recognition** by the end of 2025.

-
- For Spring 2026 (as of 4/06/2026), **four** IFC fraternities plus **three** PHC sororities are under disciplinary action or investigation:
 - Psi Upsilon: until 5/10/2026 (continuation of above noted Disciplinary Probation); additionally, both Delta Upsilon and Sigma Phi Delta under 'Interim Action Pending Investigation'.
 - Alpha Gamma Delta, Kappa Delta, and Pi Beta Phi sororities are all under 'Interim Action Pending Investigation'.

- **Important note: Chi Phi** (since 1872 LU's first, and longest continuous fraternity) is now under **Interim Suspension** starting 2/12/2026 (no details yet available), which could put them at risk of loss of recognition as occurred to Pi Lambda Phi last year.



Lehigh as an 'At-Risk' Campus

- On 10/18/2025 the Brown & White posted an introduction of Pi Kappa Phi to campus. <https://thebrownandwhite.com/2025/10/18/lehigh-to-introduce-fraternity-pi-kappa-phi-to-campus/> (Full original article -- including later deletions shown in red -- also available in the Details section)
- Embedded in that article were interview comments made by Dr. Alexandra Smith, Associate Director of Fraternity and Sorority Life (and PiLam advisor). Nine days after publication, B&W issued an “update” **deleting** her comments below about the importance of risk management for fraternity selection and LU as an “at-risk campus”.

Alexandra Smith, the associate director of fraternity and sorority life, said each organization that applied submitted informational packets about their fraternity detailing their history, structure, resources and culture.

Smith said the decision to accept Pi Kappa Phi was a student-driven choice. She said a selling point for her was that representatives from Pi Kappa Phi were also trying to appeal to faculty and staff who are not affiliated with Greek life by inducting adults and campus partners into the organization.

Smith also said the choice to bring Pi Lambda Phi and Pi Kappa Phi onto campus was partially because of their risk management policies.

“Risk management is a huge issue here at Lehigh,” Smith said. **“We’re a very at-risk campus,** so when it comes to fraternities, I think that was a glimmer of hope for our students.” (Note: boldface added.)



Current Status of Former Fraternity Houses

- LU Housing Services now lists these houses as co-ed buildings with single gender floors; part of the 'Mount Taylor' group of upper-class residence halls with Gryphons.
 - House 84 (Cap: 26, former Chi Psi) now 'Classical Education' Themed community
 - House 85 (Cap: 29, former Kappa Alpha)
 - House 87 (Cap: 42, former Kappa Sigma) Source:
<https://studentaffairs.lehigh.edu/content/mount-taylor>
 - House 88 (Cap: 34, former Phi Kappa Theta)
 - House 89 (Cap: 27, former Pi Kappa Alpha)
 - House 90 (Cap: 19, former Phi Sigma Kappa)
 - House 93 (Cap: 41, former Alpha Chi Rho)
 - House 97 (Cap: 32, former Phi Delta Theta) assigned to Pi Kappa Phi, starting Aug 2026
 - House 99 (Cap: 27, former ATO, Pi Lambda Phi) vacated by Pi Lambda Phi, Dec 2025
- Eight former Fraternity houses are now assigned as residences for Lehigh's Panhellenic Council (PHC) Sororities; i.e. former chapter houses of: Phi Gamma Delta, Beta Theta Pi, Sigma Alpha Mu, Alpha Sigma Phi, Theta Delta Chi, Pi Lambda Phi (original house), Tau Epsilon Phi, and Tau Delta Phi.
- Former Sigma Nu house at Sayre Park gates was demolished to build new LU dorms.



Challenges For a Sustainable Fraternity at Lehigh

- **Chapter conduct:** difficult to predict and control; one bad decision from an active member or alumnus can negate other efforts. **#1 cause of recent fraternity closures at Lehigh.**
- **90% occupancy requirement:** almost all LU Greek seniors and >50% of juniors live out of the house. LU tracks this but not cited as cause for IFC chapter closure recently.
- **Accreditation:** comprehensive LU expectations (GPA, philanthropy, risk awareness, leadership, DEI, mental health, etc); multiple LU advisors required; few houses achieve consistent 'Accredited' ratings, but no chapter closures for this reason since 2018 (KA).
- **New member recruitment:** high demand for new members to meet 90% occupancy and offset junior/senior in-house losses, vs limited number of FYS male students expressing fraternity interest (35%), and accepting bids (27%). (Spring 2025 rush data.)
- **Value proposition:** Fraternities are controlled, 'bedroom-furnished', and maintained by LU. What is the current value proposition for fraternity life at LU vs dorm/apartment life?
- **Liability:** constant concern for members, house officers, Alumni Board, National; and at a higher and more visible level for Lehigh Greeks than for dorm/apartment students.
- **Providing National & Alumni resources:** to help support & manage all of the above.



Details

- Jul 14, 2025 article from Pi Lambda Phi website: Pi Lambda Phi Chapter Expansion Roadmap.
- Pi Lambda Phi 2024-25 Accreditation Report extract: showing the 23 Chapter Development Questions the committee had despite giving them an 'Accredited' rating.
- B&W article from Sep 27, 2023: Changes on the Hill: Lehigh To Welcome Two New Fraternities, useful information from Sara Runyon and others about the 2023 LU Expansion process, possibly a template for future LU expansion procedures.
- Key LU Greek Expansion Documents: Fraternity Expansion & Recognition Policies
- Original B&W article from Oct 18, 2025: Pi Kappa Phi Colonization Process Released, with the 'Oct 27 Update' deleted text shown in red for context.
- LU Spring 2026 Fraternity Occupancy and Statistics reports
- LU Housing Gender Configurations website extract: defining 'Co-ed housing' as practiced in the nine former fraternity houses now used as upper-class residences.
- For reference: Lehigh IFC Fraternity Accreditation Trends (past 12 years).
- For reference: Formerly Recognized Fraternities List (directly from LU website).



Pi Lambda Phi Chapter Expansion Roadmap_1

14Jul2025; <https://www.pilambdaphi.org/news/pi-lambda-phi-chapter-expansion-roadmap/>

The longevity of Pi Lambda Phi as a national organization is dependent upon our ability to grow and pass on our values to new generations of students across the country who share a similar mindset. The HQ regularly seeks out expansion opportunities, and has focused on targeting schools with the greatest potential for long-term success.

Planting the flag of Pilam on college campuses is a subtle mix of opportunity, university support, undergrad interest, manpower, and most importantly alumni support. Alumni from many chapters have told us, “we want a place to go home to.” Pilam is doing everything we can to make that happen.

Targeted chapters for expansion

We're pleased to share our latest roadmap of expansion and the re-establishment of inactive chapters.

- University of Florida – Fall '25
- West Chester University – Spring '26
- University of North Carolina at Chapel Hill – Fall '26
- Baldwin Wallace University – Fall '26
- Penn State University – Fall '27
- University of Cincinnati – Fall '27
- University of California at Merced – Fall '27

Pi Lambda Phi Chapter Expansion Roadmap_2



14Jul2025; <https://www.pilambdaphi.org/news/pi-lambda-phi-chapter-expansion-roadmap/>

- University of Illinois – Fall '28

Which schools are selected?

The selection process is a calculated and measured process. We're not just throwing darts at a board to select expansion opportunities.

Universities are strategically selected for expansion based on potential for success. The HQ uses a tool that weighs more than 25 data points to produce a score projecting potential success.

There are three categories that are factored in to create an overall score: School score, Greek system score, and support system score. Individual data points include: campus enrollment, an active Greek system, administrative support, housing opportunities, campus life, etc.

Recent success stories

Read stories about some of the most recent Pi Lambda Phi expansions: [Florida International University](#), [East Stroudsburg](#), [Lehigh](#), [University of Iowa](#), and [West Virginia U](#).

Pi Lambda Phi Chapter Expansion Roadmap_3

14Jul2025; <https://www.pilambdaphi.org/news/pi-lambda-phi-chapter-expansion-roadmap/>



Lehigh University

When opportunity knocks

Pilam will sometimes receive an invitation to return to a university because we developed a good reputation based on our values and conduct. We are often invited back to universities (typically after four years) where our chapters may have closed for reasons like waning membership.

Pi Lambda Phi Chapter Expansion Roadmap_4



14Jul2025; <https://www.pilambdaphi.org/news/pi-lambda-phi-chapter-expansion-roadmap/>

On some occasions, undergraduates are the groundbreakers. In 2022, a group of undergraduates at the University of Iowa reached out to Pilam after finding other Greek organizations on campus that didn't measure up to what they were looking for in a fraternity.

Strong alumni support is an X-factor

Chapters with active alumni, organized alumni associations, and regular social events have a much greater potential for initial and ongoing success. Alumni have sway and can help to rally interest, influence university officials, recruit a new generation of brothers, and provide their experience to fledgling chapters.

Putting “boots on the ground”

Once a chapter is scheduled for expansion, the IHQ assigns a team of expansion coordinators and staff to begin recruitment and chapter building. They get to know the campus culture to promote the Pilam brand. They rely on face-to-face recruitment, social media, student directories, and partnering with the university and student organizations to make connections.

Recruitment is also enhanced by referrals. Surprisingly, one of the best sources of referrals comes from sororities. Director of Operations, Brian Moore said that what he hears most from sororities is that, “they want fraternities with gentlemen, not men who are full of themselves.”

Pi Lambda Phi Chapter Expansion Roadmap_5

14Jul2025; <https://www.pilambdaphi.org/news/pi-lambda-phi-chapter-expansion-roadmap/>



Help Pi Lambda Phi continue to grow!

Are you interested in starting a Pilam chapter at a college you attended, or a chapter that closed? We have resources to set this in motion. [Please contact us!](#)



PiLam Accreditation Report: 2024-25 (extract)

Chapter Development Questions:

1. How effectively does the chapter promote leadership opportunities beyond executive roles for all members?
2. In what ways does the chapter encourage members to engage with campus or national leadership conferences?
3. How are non-traditional leadership roles (e.g., Wellness Chair, DEI Chair) integrated into chapter operations and culture?
4. Are leadership retreats or goal-setting workshops being used to align chapter direction and priorities?
5. What systems are in place to hold executive board members accountable for their responsibilities?
6. How effectively is the standards or judicial board functioning in upholding chapter accountability?
7. Are chapter documents, calendars, and communication tools organized and accessible to all members?



PiLam Accreditation Report: 2024-25 (extract)

8. What systems are in place to ensure compliance with national, campus, and IFC policies?
9. What strategies are in place to prevent burnout among officers and committee chairs?
10. What steps is the chapter taking to ensure continuity of service programs from semester to semester?
11. How does the chapter ensure that community service opportunities are inclusive and accessible to all members?
12. What reflection or discussion is built into the service experience to reinforce chapter values?
13. In what ways is the chapter collaborating with other Greek or student organizations for service initiatives?
14. How can the chapter work to establish more meaningful relationships with organizations both within the Interfraternity council and those in the Panhellenic and Cultural Greek Councils?



PiLam Accreditation Report: 2024-25 (extract)

15. How well are chapter-wide study sessions or academic workshops attended and structured?
16. How are academic expectations communicated during recruitment and new member education?
17. What is the chapter doing to support members in balancing academics with other commitments?
18. What role does the Academic Chair play in setting goals, tracking progress, and maintaining standards?
19. How does the chapter evaluate and reflect on academic performance collectively each semester?
20. How effectively is the chore system or house duty roster being enforced?
21. How are members educated on shared living expectations and cleanliness standards?
22. How is feedback from live-in members collected and used to improve the residential experience?
23. How often does the chapter assess the condition of key shared spaces (kitchen, bathrooms, study rooms) to ensure they remain functional and welcoming?

Changes On the Hill: Lehigh To Welcome Two New Fraternities_1



(Note: Underlines added for these slides.)

Brown and White article, Sep 27, 2023



Danny Miller, senior director of prevention and accountability for Alpha Sigma Phi, presents his organization's plan on Sept. 19 in Rauch Business Center to integrate the new fraternity into the Lehigh community. The process for establishment and recruitment for the potential fraternities requires heavy support from the national headquarter's staff and local alumni of the fraternity to educate and prepare the new members. (Connor Malinger/B&W Staff)

Changes On the Hill: Lehigh To Welcome Two New Fraternities _2



Lehigh's Interfraternity Council plans to expand its membership by two fraternities over the next two years — one fraternity will be established on campus in spring 2024 and the second will join in spring 2026.

Sara Runyon, director of student involvement, said staff from the national headquarters of the five potential additions will visit campus to share information about their organization with the campus community to decide who will join.

The first to present was Alpha Sigma Phi on Sept. 19. Following them will be Lambda Chi Alpha on Sept. 27, Pi Kappa Phi on Oct. 2, Beta Theta Pi on Oct. 3 and Pi Lambda Phi on Oct. 4.

The representatives will present in Room 091 in the Rauch Business Center at 4:45 p.m. on the above dates. The meetings are open to all members of the Lehigh community interested in learning more about the visions of these organizations, their purposes at Lehigh and what a potential member could expect.

“They’ll have a chance to meet with students in small groups, a chance to meet with some staff members at Lehigh, a chance to meet with housing services and tour what would be potential future facilities available to them,” Runyon said.

A survey will be provided to all attendees at the conclusion of the presentations for their chance to share feedback about the organizations, including any benefits they believe the fraternities might provide to the Lehigh community. She said these results will be taken into consideration as the Interfraternity Council expansion committee reviews each fraternity.

Changes On the Hill: Lehigh To Welcome Two New Fraternities_3



Runyon said the Interfraternity Council organizations will be the ones who ultimately vote on who is invited to join Lehigh.

She said the Office of Student Involvement, previously the separate Office of Sorority and Fraternity Affairs and Office of Student Engagement, began the process of fraternity expansion after the Interfraternity Council indicated interest in March.

Although interest in Greek life has remained, Runyon said the number of fraternities at Lehigh has decreased, resulting in limited options.

The Interfraternity Council expansion committee was formed in late March to carry out the expansion. Runyon said the committee is made up of an undergraduate member of each of the existing Interfraternity Council fraternities on campus, two representatives from the Interfraternity Council executive board, one Fraternity and Sorority Life staff member, a staff member from housing services selected by the students on the committee, and two other Lehigh staff members.

She said an announcement inviting applications was made through the North American Interfraternity Conference, the international organization behind Lehigh's Interfraternity Council.

[Lehigh Greeks](#), the Office of Fraternity and Sorority Affairs' blog, posted a copy of the announcement on April 5, opening applications for the expansion of the Interfraternity Council to any interested organizations, with preference given to organizations that existed at Lehigh in the past.

Changes On the Hill: Lehigh To Welcome Two New Fraternities_4



The committee received 22 application packets, which Runyon said was more than anticipated. They reviewed the options through May, June and the first half of July.

“The committee selected five organizations that the folks on the committee — but really largely the students more than anybody — felt were going to offer the most meaningful, most helpful, most in line with Lehigh values programming and experience to people who maybe will eventually be a part of that fraternity at Lehigh,” Runyon said.

All of the fraternities selected, except Pi Kappa Phi, had previously been active on Lehigh’s campus and either left or were removed by Lehigh or the national headquarters. The most recent is Lambda Chi Alpha, which was dissolved from Lehigh in 2014.

Runyon said the committee also considered what the fraternities’ departure from campus was like, including the cooperation of their headquarters and the staff supporting them.

The committee asked returning fraternities about chapter expectation changes and approaches for such changes for chapters from the national organizations.

“I think part of why these organizations were selected was because they answered that in a way that felt really appropriate,” Runyon said. “There was some really intentional thought process going into who will support this organization, both from staff at the national organization and also from potential alumni who will serve as advisers or on an advisory board.”

Changes On the Hill: Lehigh To Welcome Two New Fraternities_5



The final decision on which fraternities will be selected and established first will depend on the availability of supporting staff or volunteers from the national organizations.

Danny Miller, senior director of prevention and accountability at Alpha Sigma Phi, expressed the fraternity's interest in joining Lehigh's campus in spring 2024. He outlined a two-part plan spanning 16 weeks for integration on Lehigh's campus headed by fraternity-paid staff.

He said the organization's goal is to recruit a minimum of 35-40 members and to remain on campus until they have a sustainable presence.

"We will not create an experience for them where they are struggling right at the onset," Miller said. "We want them to have the resources to be successful."

Staff from the selected fraternities will be recruiting students from all class years for their inaugural class, Runyon said, especially those in leadership roles, studying a variety of subjects or involved with Lehigh in other capacities such as being a Gryphon or orientation leader.

The staff and local alumni of the fraternity will onboard new members and help the chapter through the process of getting established at Lehigh, Runyon said, including appointing an executive board and further preparing them to run the organization.

The task ahead for the inaugural class seems daunting for Aidan Lee, '26, an Interfraternity Council representative for Phi Sigma Kappa. He said he is concerned about the balance between Greek and non-Greek communities and the balance between sororities and fraternities.

Changes On the Hill: Lehigh To Welcome Two New Fraternities_6



“I like seeing Lehigh’s Greek community expand, but I think there’s a limit to how much it should expand because it’s already a pretty fraternity-dominant school in terms of the culture here,” Lee said.

He said a lot of fraternity culture and operation is built on tradition, and starting from scratch, especially for upperclassmen who might not have experience with Greek life, will take a lot of sacrifice.

“If I was an upperclassman, I would want no part of a new fraternity,” Lee said.

Catherine Wilbur, ‘26, a member of the Panhellenic community, said the addition of the fraternities would benefit the community at Lehigh, especially considering the recent increase in fraternities being removed from campus.

“Some people want to join Greek life and haven’t found a place where they really fit in, so I think adding new fraternities would be a great opportunity for new people to get involved,” Wilbur said.

Runyon said any students interested in joining the new fraternities should email infrasor@lehigh.edu for more information, and the office will also help anyone interested in Cultural Greek Council expansion.



Key LU Greek Expansion Documents (2026.03.31 extract)

- The following two LU documents are the key references governing the steps necessary for any fraternity wishing to establish (or recolonize) a chapter at Lehigh.
- ‘Lehigh Fraternity/Sorority Expansion Policy’
 - This 13-page pdf document describes the pre-conditions, processes, and requirements to be followed for any Greek organization seeking a Lehigh chapter. Clicking the link below will download the pdf file. The first four pages include the introduction and ‘Section 1: University Expectations For Expansion’. Pages 8 – 9 include ‘Section 3: Interfraternity Council Expansion Process’. Other pages detail Cultural Greek Council or Panhellenic Council expansion processes.
 - https://studentaffairs.lehigh.edu/sites/studentaffairs.lehigh.edu/files/offices/ofsa/docs/Lehigh%20Fraternity_Sorority%20Expansion%20Policy.pdf
- ‘Lehigh University Recognition Policy for Fraternities and Sororities’: The pdf file described previously contains an embedded weblink that directs to this LU Office of Student Involvement website (link shown below). This online document has several sections detailing: Purpose & Philosophy, Eligibility for Recognition, Levels and Benefits of Recognition, Criteria for Recognition, and Loss of Recognition.
 - <https://studentaffairs.lehigh.edu/content/lehigh-university-recognition-policy-fraternities-and-sororities>

10/18/2025 original B&W article with 10/27 “Updated” text deletions in red



Pi Kappa Phi Colonization Process Released_1

Lehigh is set to bring the Pi Kappa Phi fraternity, also known as “Pi Kap,” to the hill in spring 2026.

Unlike all previous fraternities and sororities brought to campus, Pi Kappa Phi has no Lehigh alumni network, causing confusion for alumni who believed an organization with a history on campus should have been prioritized.

The Lehigh Interfraternity Council [announced in October 2023](#) that Pi Kappa Phi would be one of two additional fraternities joining Lehigh, along with Pi Lambda Phi which was officially established in 2024.

According to the [Lehigh Greek Community blog](#), the university received 22 applications for fraternities, and five were selected to present on campus about their organization.

Alexandra Smith, the associate director of fraternity and sorority life, said each organization that applied submitted informational packets about their fraternity detailing their history, structure, resources and culture.

From there, the committee of students, IFC representatives and Lehigh administrators reviewed five organizations to come to campus to present their organization in person.

Smith said the decision to accept Pi Kappa Phi was a student-driven choice. She said a selling point for her was that representatives from Pi Kappa Phi were also trying to appeal to faculty and staff who are not affiliated with Greek life by inducting adults and campus partners into the organization.

Smith also said the choice to bring Pi Lambda Phi and Pi Kappa Phi onto campus was partially because of their risk management policies.



Pi Kappa Phi Colonization Process Released_2

Smith said each Greek chapter has different national policies in regards to risk management and Pi Kappa Phi's policies stood out as robust.

Of the nine fraternities currently on Lehigh's campus, five are on some extent of disciplinary conduct status. Delta Chi, Delta Upsilon, Psi Upsilon and Sigma Phi Epsilon are on disciplinary probation. Pi Lambda Phi has been interimsly suspended since Sept. 4, according to [Lehigh's Office of Student Involvement](#).

"Risk management is a huge issue here at Lehigh," Smith said. "We're a very at-risk campus, so when it comes to fraternities, I think that was a glimmer of hope for our students."

Pi Kappa Phi will move into House 97 on the hill, with their recruitment period running from the beginning of the spring semester until spring break. The house was previously used as the Outdoor Enthusiasts House, one of five upper-classmen themed housing communities.

According to the initial Lehigh Greek Community blog post announcing Pi Kappa Phi's arrival, the fraternity has a "unique approach toward positive alumni engagement, mental health resources for all members and enthusiasm for fostering a healthy fraternal experience" that made them stand out in the selection process.

According to Pi Kappa Phi's [website](#), the fraternity has more than 150 active chapters nationwide and more than 160,000 members.



Pi Kappa Phi Colonization Process Released_3

Sarah Johnson, the chief growth officer of Pi Kappa Phi, said the national organization will bring two full-time staff members to campus in the spring to support the initial recruitment process.

She also said there will then be a seven-week recruitment period where members will become familiarized with and integrated into the Lehigh community.

Johnson said Lehigh has been a “dream institution” for Pi Kappa Phi for a long time. She also said the organization focuses on leadership and hands-on community service opportunities, especially the importance of making campus facilities more accessible to everyone.

Amid excitement about the new chapter, David Polakoff, '86, the former president of Lehigh's Greek Alumni Council and former president of the Sigma Alpha Mu fraternity, said he believes a fraternity with preexisting Lehigh alumni networks should have been chosen over a new one.

“Let me be clear, I want this fraternity to succeed,” Polakoff said. “That being said, I, and other alums, are vexed, miffed and perplexed as to why a chapter that has never been on Lehigh's campus was given that right to be part of the expansion.”

Polakoff said according to Lehigh's [2004 Greek Life Implementation Report](#), preference should be given to formerly recognized Lehigh fraternities.

He also said when he was a student, there were an abundance of organizations that assessed each fraternity and sorority to ensure they were complying with guidelines, including the Greek Life Implementation Group and the Strengthening Greek Life Initiative, but now, these committees seem to have disappeared.



Pi Kappa Phi Colonization Process Released_4

According to the Student Affairs [website](#), the Strengthening Greek Life Initiative dissolved in 2014 when a committee re-visioned the accreditation process.

He said he places a great deal of responsibility on the administration that didn't uphold the work done to protect Greek Life guidelines by previous administrators, alumni and undergraduates.

Polakoff said there were 32 fraternities on campus when he was an undergrad. He credits the drop in numbers of fraternities not only to the Lehigh administration, but also to the fraternities' own behavior.

“Unfortunately, there’s a sense of arrogance that says, ‘Oh, that won’t happen to us, we won’t get caught,’ and of course, they get caught,” Polakoff said.

Johnson said although Pi Kappa Phi doesn't have alumni from Lehigh, the fraternity has more than 400 living alumni within a 25-mile radius of campus.

“(These alumni) are really excited and eager to support a new start to a new chapter,” Johnson said.

“Not only is it not their chapter, they’re just excited to promote and expand Pi Kappa Phi’s brotherhood to another group of students.”



Lehigh Spring 2026 Greek Statistics Reports

- Lehigh's Spring 2026 'Greek Occupancy' report shows that all 8 remaining IFC fraternities are currently above 90% 'Capacity with Exemptions', as mandated by LU.
- Lehigh has changed the report format to stop showing in-house occupancy by class year, although we know from previous reports that most in-house members are SYS, with a few juniors and almost no seniors.
- LU has added the new categories 'Not In-House (On-Campus)' and 'Off Campus Members Total' to account for members not living in the house.
- From Fall 2022 – Fall 2025 there has been little change either in the LU male enrollment (usually about 3,050), or the percentage of LU males in fraternities (usually about 18%).
- Another change for Spring 2026 has been the addition of an 'IFC Fraternity Recruitment Trends' section. One clear change over the Spring 2022 – Fall 2025 reporting period is a reduction in Fall fraternity rushing to supplement the normal Spring rush.
- Figures given for the Spring 2025 rushing period indicate that 35% of FYS males expressed interest in joining an IFC fraternity, with 27% finally accepting IFC bids.
- See the next slides for copies of the reports.



New Style Spring 2026 Greek Occupancy Report

↓ ↓ (new reporting categories)

	In House Members Total	Capacity	90% Capacity	Not In-House (On-Campus)	Off Campus Members Total	Total Members	% Capacity without Exemptions	Known In-House Exemptions	% Capacity with Exemptions	*
Alpha Epsilon Pi	23	24	21	24	31	78	95.83%	0	95.83%	
Chi Phi	33	37	33	27	21	81	89.19%	3	97.30%	
Delta Chi	23	27	24	28	42	93	85.19%	2	92.59%	
Delta Upsilon	32	30	27	21	22	75	106.67%	2	113.33%	
Psi Upsilon	28	30	27	17	25	70	93.33%	3	103.33%	
Sigma Phi Delta	31	29	26	30	23	84	106.90%	0	106.90%	
Sigma Phi Epsilon	30	27	24	21	17	68	111.11%	0	111.11%	
Theta Chi	29	28	25	20	32	81	103.57%	3	114.29%	
Total	229	232	207	188	213	630	98.71%	13	104.31%	
Alpha Gamma Delta	42	43	38	53	31	126	97.67%	5	109.30%	
Alpha Omicron Pi	31	38	34	42	52	125	81.58%	15	121.05%	
Alpha Phi	39	38	34	27	60	126	102.63%	3	110.53%	
Gamma Phi Beta	30	41	37	32	60	122	73.17%	11	100.00%	
Kappa Alpha Theta	25	35	32	27	20	72	71.43%	4	82.86%	
Kappa Delta	36	33	30	39	51	126	109.09%	10	139.39%	
Pi Beta Phi	37	38	34	36	53	126	97.37%	4	107.89%	
Zeta Tau Alpha	31	32	28	44	51	126	96.88%	6	115.63%	
Total	271	298	267	300	378	949	90.94%	58	110.40%	
Greek Total	500	557	498	488	591	1579				

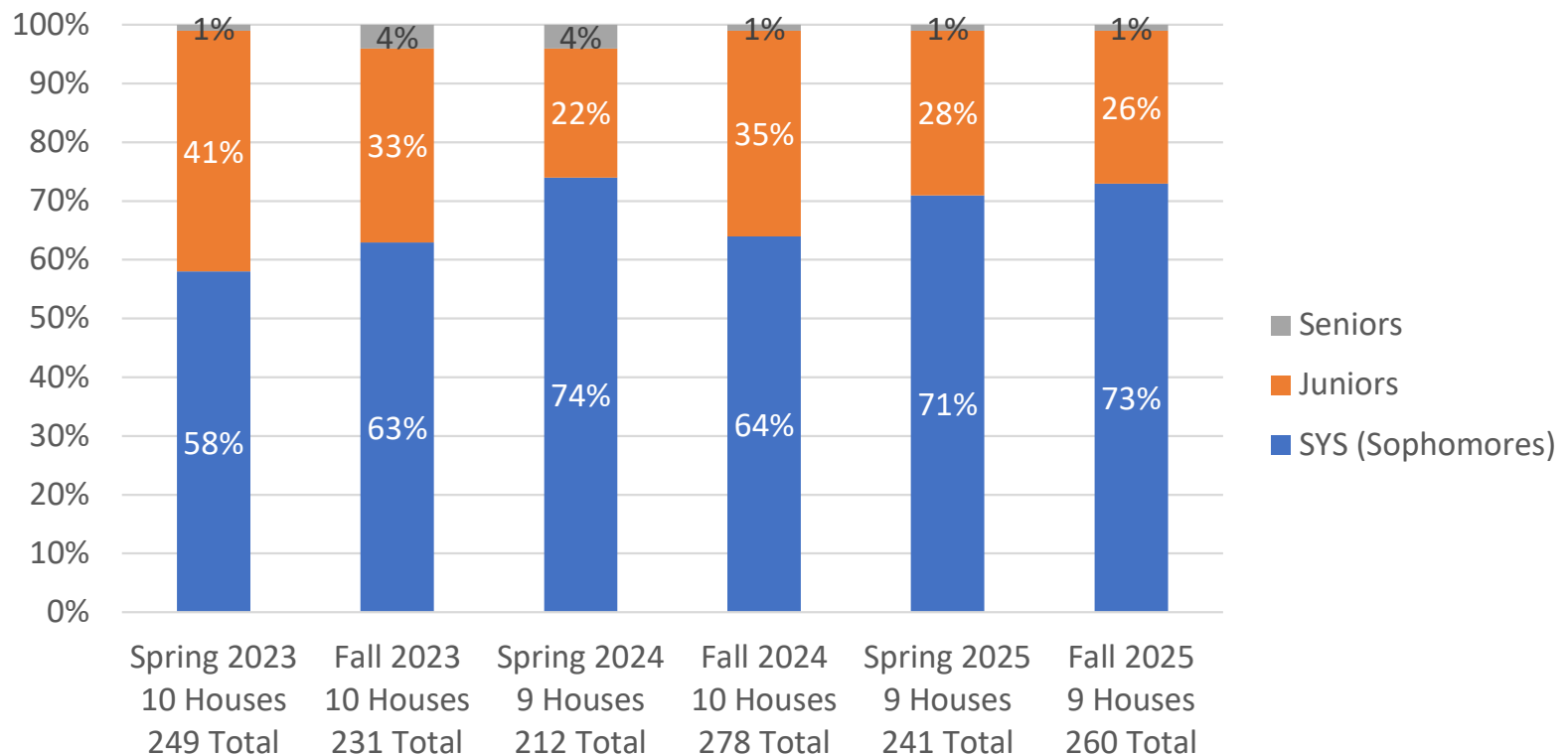
* Three consecutive semesters <90% risks loss of group housing. Exemptions given for members working as a Gryphon, participating in Study Abroad or Co-op, or joining Theme Housing that requires residency. Average capacity of current Greek houses is 29 for IFC fraternities and 37 for PHC sororities.

Source: <https://studentaffairs.lehigh.edu/content/occupancy> (click 'Occupancy Report' at the bottom of the page)



Greek Occupancy Trend (in-house, % by class)

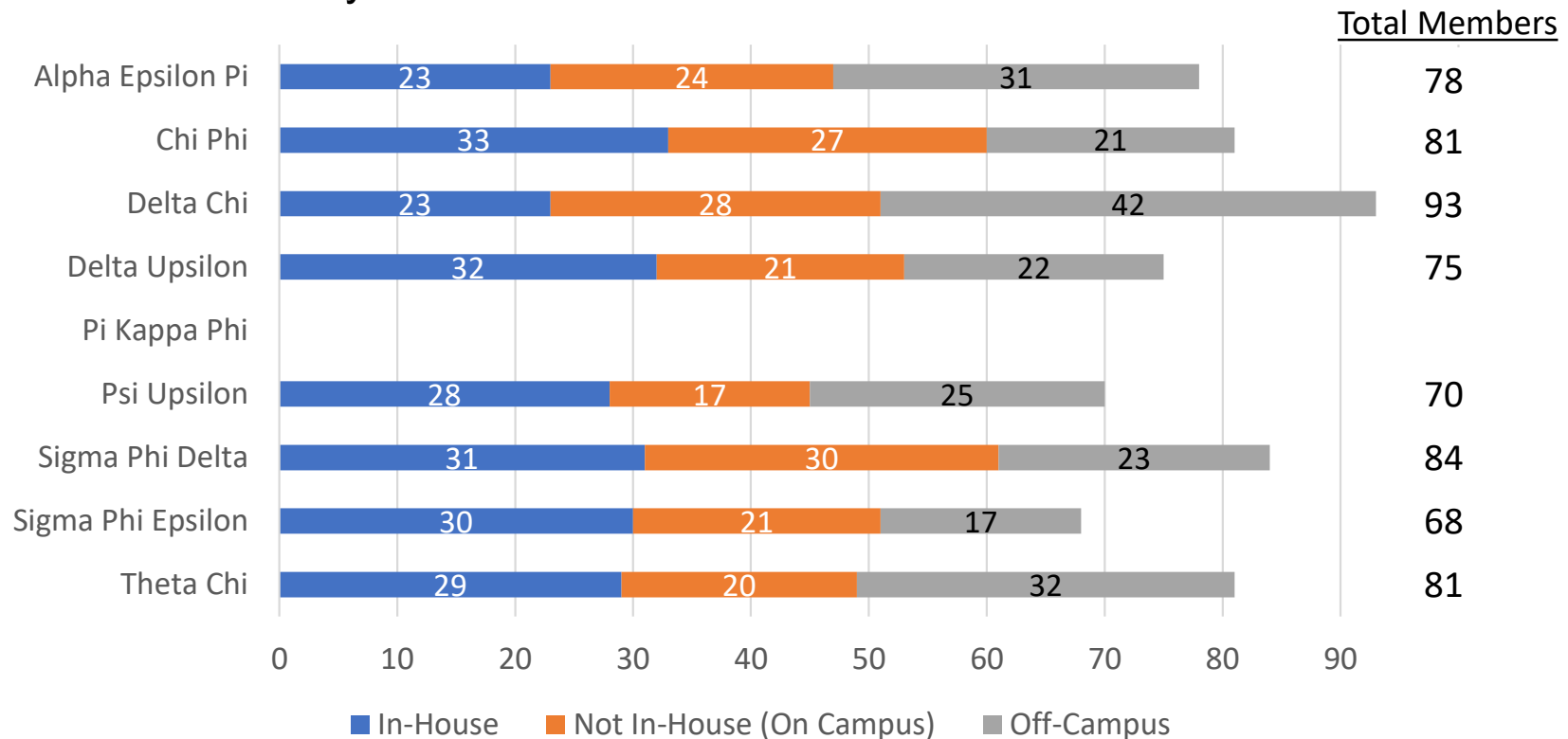
- Starting Jan 2026 LU ceased reporting fraternity occupancy by class year.
- Previous reports showed that in-house IFC fraternity life had become increasingly dominated by Second-Year-Students. Seniors had already left most chapter houses and in-house residency by Juniors was declining.





Greek Occupancy by Residency (new data)

- Starting Jan 2026 LU began reporting a new fraternity residency category: **‘Not In-House (On Campus)’** - a sizable group not previously visible in the statistics.
- Where do these members live? Since this is Spring semester data does it just represent ‘New Member’ classes in FYS residences and maybe a few Junior and Senior active members in university dorms? Will need to see Fall 2026 data to learn more.



■ In-House ■ Not In-House (On Campus) ■ Off-Campus

The Kappa Alpha Alumni Association of Lehigh University

New: LU IFC Recruitment Trends added to regular Greek Statistics Reporting (published Jan 5, 2026)



FRATERNITY & SORORITY STATISTICS AND TREND ANALYSIS								
LEHIGH UNIVERSITY								
INTERFRATERNITY COUNCIL								
Recruitment Trends	Spring 2022	Fall 2022	Spring 2023	Fall 2023	Spring 2024	Fall 2024	Spring 2025	Fall 2025
	<i>12 chapters</i>	<i>11 chapters</i>	<i>10 chapters</i>	<i>10 chapters</i>	<i>10 chapters</i>	<i>10 chapters</i>	<i>9 chapters</i>	<i>9 chapters</i>
Recruitment Interest	348	40	302	42	233	10	298	5
Eligible potential members	301	33	249	38	217	9	282*	4
Ineligible potential members	47	7	53	4	16	1	16	1
Number of chapters recruiting	12	5	10	9	10	3	9	4
# of total bids distributed	318	31	255	34	262	9	219	3
# of unique bids distributed	224	31	202	34	262	9	219	3
# of bids accepted	203	30	188	30	220	8	218*	3
# of bids declined	21	1	65	4	40	1	1	0
# of depledges	5	1	7	5	14	0	9	0
Average new member class size	16.17	5.80	18.4	2.5	20.8	2.67	22.9	1
# of disaffiliations	11	10	18	11	5	16	7	26
Average chapter size	62.92	46.08	66.4	55.1	71	53.4	76.11	58.11
Total IFC membership	767	553	716	551	710	534	685	523

* Given LU 2024-25 enrollment of 795 FYS males, then 282 Eligible potential members = **35%** of FYS males expressing interest, with **27%** accepting IFC bids.

Src: <https://studentaffairs.lehigh.edu/content/reports-statistics> (click Trend Analysis Reports)



Lehigh Greek Statistics & Trends (published Jan 5, 2026)

FRATERNITY & SORORITY STATISTICS AND TREND ANALYSIS								
LEHIGH UNIVERSITY								
Enrollment Trends	Spring 2022	Fall 2022	Spring 2023	Fall 2023	Spring 2024	Fall 2024	Spring 2025	Fall 2025
Undergraduate Enrollment	4978	5677	5624	5811	5677*	5887	5349	5968
# of Males	2671	3070	3037	3047	2969	3059	2810	3054
# of Females	2307	2605	2587	2764	2704	2828	2538	2914
# of Sororities	11	11	11	11	11	11	11	11
# of Fraternities IFC (9), CGC (3)	13	13	11	12	12	12	12	12
# of Men in Fraternities	767	567	733	568	729	552	713	545
% of Greek Males	28.7%	18.5%	24%	18.60%	24.60%	18.05%	25.40%	17.80%
# of Women in Sororities	850	663	873	694	912	729	931	730
% of Greek Females	36.8%	25.5%	33.70%	25.10%	33.70%	25.80%	36.70%	25.10%
# of Greek Undergraduates	1617	1230	1606	1263	1641	1281	1644	1275
% of Greek Undergraduates	32.5%	21.7%	28.60%	21.73%	28.90%	21.80%	30.70%	21.40%
# of New Members	453	47	418	63	458	30	450	31
<i>*As of Fall 2022 students are able to identify as gender neutral and are included in overall enrollment numbers but not in male or female statistics</i>								
Academic Trends	Spring 2022	Fall 2022	Spring 2023	Fall 2023	Spring 2024	Fall 2024	Spring 2025	Fall 2025
All Lehigh Undergraduate GPA	3.29	3.26	3.32	3.28	3.42	3.32	3.46	3.36
All Lehigh Male GPA	3.20	3.17	3.24	3.19	3.35	3.23	3.37	3.29
All Lehigh Female GPA	3.40	3.35	3.41	3.38	3.48	3.41	3.51	3.43
All Greek GPA	3.37	3.38	3.31	3.41	3.42	3.43	3.46	3.44
All Fraternity GPA	3.24	3.29	3.31	3.3	3.33	3.34	3.35	3.36
All Sorority GPA	3.49	3.50	3.47	3.51	3.5	3.51	3.56	3.52
Housing Trends (residential chapters only)	Spring 2022 19 chapters	Fall 2022 18 chapters	Spring 2023 17 chapters	Fall 2023 18 chapters	Spring 2024 17 chapters	Fall 2024 18 chapters	Spring 2025 17 chapters	Fall 2025 17 chapters
# of Fraternity Members Living In	262	265	229	231	212	278	241	260
# of Fraternity Members Living Out	507	223	192	299	289	260	238	263
# Fraternities Below Occupancy	7	2	5	7	3	2	0	1
# of Sorority Members Living In	277	335	278	326	268	319	271	317
# of Sorority Members Living Out	573	307	242	284	377	392	374	401
# Sororities Below Occupancy	3	1	2	0	0	0	0	0

Only ~ 50% of IFC members live in-house.

Src: <https://studentaffairs.lehigh.edu/content/reports-statistics> (click Trend Analysis Reports)



LU Housing Gender Configurations

Housing Services

Co-ed, Single Gender, and All Gender Housing

Housing Gender Configurations

Lehigh University offers different housing options to support our ongoing commitment to developing environments that are welcoming and inclusive. Lehigh University affirms the rights of all students to live on the floor in accordance with their gender identity.

Co-ed Housing

The majority of our traditional style Residence Halls are Co-ed in some configuration.

A **Co-ed building** is defined as a building which houses students who identify as men, women, or non-binary.

A **Co-ed floor or wing** has alternating gender rooms, suites, or apartments on the same floor, with single-gender bathrooms. **Note: This designation applies to the former fraternity houses now being used for upper-class residences with Gryphons.**

Co-ed housing is available for all undergraduate students who are eligible for University Housing.

All first-year residence halls are co-ed buildings, and the distribution of wings and floors varies in each building.

Co-ed housing is also available and suite/apartment style housing for Upperclass students.

Source: <https://auxiliaryservices.lehigh.edu/co-ed-and-single-gender-housing>

The Kappa Alpha Alumni Association of Lehigh University



Lehigh IFC Fraternity Accreditation (Past 12 years)

- Only 4 of 9 current fraternities consistently rated Accredited or better for >10 years (✓).
- 3 of 5 recolonizations lasted <10 years: Pi Kappa Alpha (9 yrs), Phi Delta Theta (10 yrs), Pi Lambda Phi (2 yrs)

	2013-14	2014-15	2015-16	2016-17	2017-18	2018-19	2019-20	2020-21	2021-22	2022-23	2023-24	2024-25
Chi Phi	Silver	Silver	Poor	Accred.	Excel.	Unaccred.	Covid	Covid	Excel.	Excel.	Excel.	Excel.
✓ Delta Upsilon	Silver	Gold	Gold	Accred.	Accred.	Accred.	Covid	Covid	Accred.	Accred.	Accred.	Accred.
✓ Psi Upsilon	Silver	Gold	Silver	Accred.	Accred.	Accred.	Covid	Covid	Accred.	Accred.	Accred.	Accred.
✓ Sigma Phi Epsilon	Silver	Silver	Silver	Accred.	Unaccred.	Accred.	Covid	Covid	Excel.	Accred.	Unaccred.	Accred.
✓ Theta Chi	Silver	Bronze	Bronze	Accred.	Accred.	Accred.	Covid	Covid	Excel.	Excel.	Excel.	Excel.
Delta Chi	Silver	Silver	Silver	Unaccred.	Accred.	Accred.	Covid	Covid	Accred.	Accred.	Accred.	Accred.
✓ Alpha Epsilon Pi	N/A	N/A	Gold	Excel.	Excel.	Accred.	Covid	Covid	Excel.	Accred.	Accred.	Excel.
Sigma Phi Delta	N/A	N/A	N/A	N/A	N/A	N/A	N/A	Covid	Accred.	Excel.	Accred.	Excel.
○ Pi Lambda Phi	N/A	N/A	N/A	N/A	N/A	N/A	N/A	N/A	N/A	N/A	N/A	Accred.
Chi Psi	Poor	Bronze	Poor	Accred.	Accred.	Accred.	Covid	Covid	Unaccred.	Accred.	Accred.	N/A
Phi Sigma Kappa	Silver	Gold	Gold	Excel.	Accred.	Accred.	Covid	Covid	Unaccept.	Accred.	N/A	N/A
○ Phi Delta Theta	Gold	Silver	Silver	Excel.	Accred.	Accred.	Covid	Covid	Unaccred.	N/A	N/A	N/A
Alpha Tau Omega	Bronze	Bronze	Gold	Unaccred.	Accred.	Accred.	Covid	Covid	N/A	N/A	N/A	N/A
Phi Kappa Theta	Silver	Poor	Bronze	Unaccred.	Accred.	Accred.	N/A	N/A	N/A	N/A	N/A	N/A
Theta Xi	Bronze	Poor	Bronze	Unaccred.	Accred.	Unaccred.	N/A	N/A	N/A	N/A	N/A	N/A
Kappa Alpha	Silver	Bronze	Bronze	Unaccred.	Unaccred.	N/A	N/A	N/A	N/A	N/A	N/A	N/A
○ Pi Kappa Alpha	Silver	Silver	Bronze	Accred.	N/A	N/A	N/A	N/A	N/A	N/A	N/A	N/A
Sigma Chi	Silver	Silver	Poor	Accred.	N/A	N/A	N/A	N/A	N/A	N/A	N/A	N/A
Kappa Sigma	Silver	Silver	Silver	N/A	N/A	N/A	N/A	N/A	N/A	N/A	N/A	N/A
Delta Phi	Silver	N/A	N/A	N/A	N/A	N/A	N/A	N/A	N/A	N/A	N/A	N/A
Lambda Chi Alpha	Unaccept.	N/A	N/A	N/A	N/A	N/A	N/A	N/A	N/A	N/A	N/A	N/A

Formerly Recognized Fraternities

NAME	YEAR CLOSED	REASON	CLOSED BY
Alpha Chi Rho	2007	Unacceptable in Accreditation	Lehigh
Alpha Phi Alpha	2016	Failed to meet requirements	Headquarters
Alpha Tau Omega	2022	Hazing & alcohol	Lehigh
Alpha Sigma Phi	2005	Overall performance and risk management	Headquarters
Beta Theta Pi	2008	Hazing & alcohol	Headquarters & Lehigh
Chi Psi	2024	Hazing & Alcohol	
Delta Phi	2015	Hazing & alcohol	Lehigh
Delta Tau Delta	2011	Hazing & alcohol	Headquarters
Delta Sigma Phi	2007	Poor in Accreditation for two years in a row	Lehigh
Kappa Alpha	2018	Unaccredited in Accreditation for two years in a row	Lehigh
Kappa Sigma	2017	Risk management	Lehigh
Lambda Chi Alpha	2014	Unacceptable in Accreditation	Lehigh
Omega Psi Phi	2012	Failed to meet recognition requirement	Lehigh
Phi Delta Theta	2023	Alcohol & Risk Management	Headquarters
Phi Gamma Delta	2013	Poor in Accreditation for two years in a row	Lehigh
Phi Kappa Theta	2020	Alcohol & Risk management	Lehigh
Phi Sigma Kappa	2024	Hazing & Alcohol	Lehigh
Pi Kappa Alpha	2018	Risk Management	Lehigh
Phi Sigma Delta <i>(headquarters merged with Zeta Beta Tau in 1969)</i>	1933	Low membership	Headquarters
Sigma Chi	2017	Alcohol & Risk management	Lehigh
Sigma Nu	2002	Alcohol & hazing	Lehigh
Sigma Phi	1998	Low membership	Alumni
Sigma Alpha Mu	2008	Hazing & alcohol	Lehigh
Tau Delta Phi	1974	Low membership; remaining members joined Zeta Psi	Chapter
Tau Epsilon Pi	1991	Low membership	Chapter
Theta Delta Chi	2003	Risk management	Headquarters
Theta Xi	2020	Alcohol & Risk management	Lehigh
Zeta Psi	2000	Alcohol & Risk management	Lehigh

Source: Lehigh University Conduct Status website extract 2026.03.31

(not yet updated with Pi Lambda Phi, Dec 2025 closure, Reason: Hazing)